

# STONELEIGH

Area 222m<sup>2</sup> – 23.9sq\*

\*Includes optional alfresco area



Southport facade

✓ Available in 7 facade options

## Designed for a 17 - 19m lot width

Exuding great street appeal, the Stoneleigh is a stylish home that offers modern, open plan living. This spacious home features extra large bedrooms, generous family and dining areas and a large separate living/home theatre. The large master suite, internal garage access and spacious bathroom with separate WC all add to the high appointment level of this home. The kitchen has a large walk in pantry, large breakfast bar and has good connectivity to the optional alfresco area. Additionally, a drive-through garage for boats and trailers makes the Stoneleigh a truly versatile home.

**vibe**  
more than four walls

Bayswood, Vincentia  
(02) 4443 2991

Haywards Bay  
(02) 4256 6618

[www.vibeliving.com.au](http://www.vibeliving.com.au)

# STONELEIGH

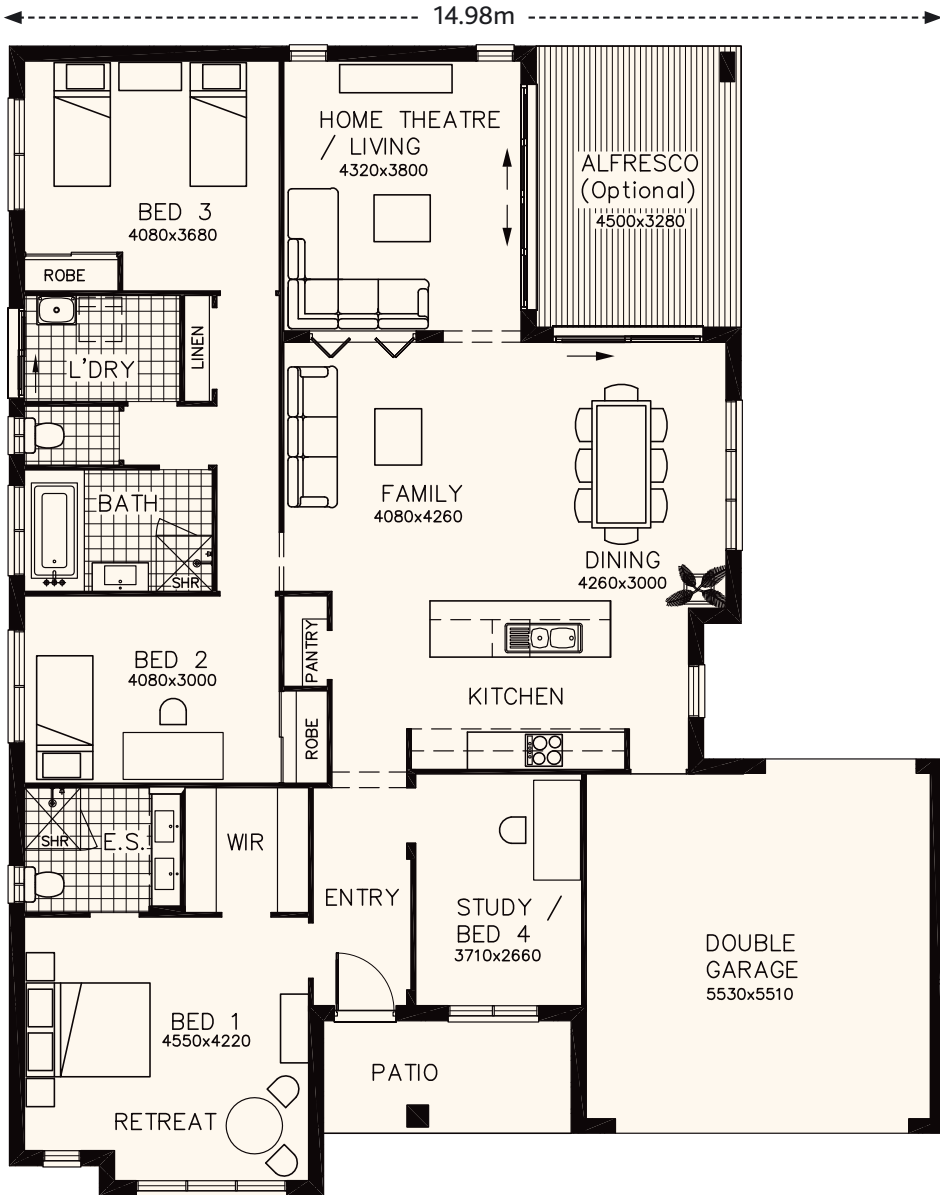
Area 222m<sup>2</sup> – 23.9sq\*

\*Includes optional alfresco area



Designed for a 17 - 19m lot width

✓ Available in 7 facade options



All areas based on the Urban Facade. Dimensions to front of home will vary subject to chosen facade.



The particulars are set out as a general outline only. This representation is intended as a guide for intending purchaser/s and does not constitute an offer or contract. Intending purchaser/s should satisfy themselves by inspection or otherwise to the correctness of each description or reference.